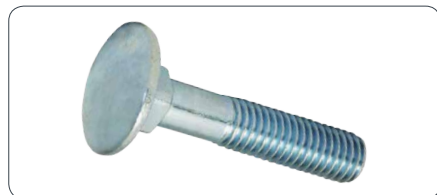
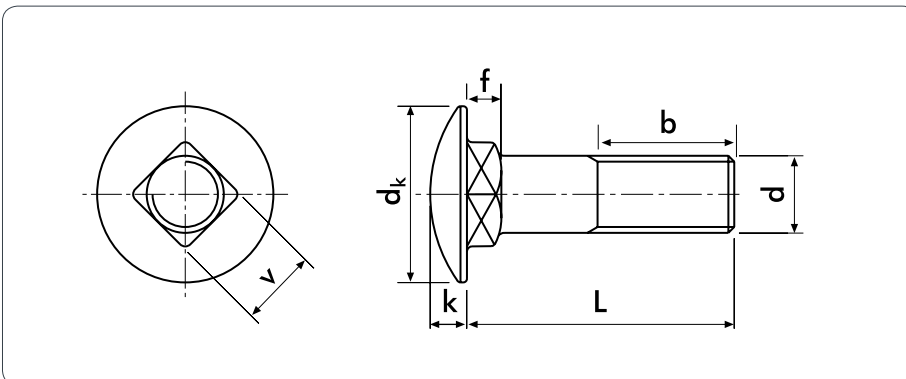


UNI 5732 | ISO 8677 | DIN 603



Ferro; Aço 8.8; Inox A2; A4;
 Iron; Steel 8.8; Stainless Steel A2; A4;
 Hierro; Acero 8.8; Acero Inoxidable A2; A4;
 Fer; Acier 8.8; Acier Inoxydable A2; A4;
 Ferro; Acciaio 6.8; 8.8; Acciaio Inossidabile A2; A4;



Parafuso arreigada quadrada cabeça oval

Mushroom head square neck bolt | Tornillos de cabeza abombada y cuello cuadrado | Vis à métaux tête ronde collet carré | Viti testa tonda con quadro

| D | M5 | M6 | M8 | M10 | M12 | M16 | M20 |
|--------|---|-------|-------|-------|-------|-------|-------|
| P (1) | 0.8 | 1 | 1.25 | 1.5 | 1.75 | 2 | 2.5 |
| b (x) | rosca total/ fully threaded/ totalmente roscado/ filetage total/ totalmente filettate | | | | | | |
| b (y) | 16 | 18 | 22 | 26 | 30 | 38 | 46 |
| b (z) | 22 | 24 | 28 | 32 | 36 | 44 | 48 |
| dk | 13.55 | 16.55 | 20.65 | 24.65 | 30.65 | 38.8 | 46.8 |
| k | 3.3 | 3.88 | 4.88 | 5.38 | 6.95 | 8.95 | 11.05 |
| f | 4.1 | 4.6 | 5.6 | 6.6 | 8.75 | 12.9 | 15.9 |
| v | 5.8 | 6.48 | 8.56 | 10.58 | 12.70 | 16.70 | 20.84 |
| L (mm) | peso/ weight/ peso/ poids/ peso - 1000pc/Kg | | | | | | |
| 16 | 4.0 | 6.9 | | | | | |
| 20 | 4.5 | 7.6 | 13.8 | 22.7 | | | |
| 25 | 5.1 | 8.5 | 15.4 | 25.2 | | | |
| 30 | 5.9 | 9.6 | 17.0 | 27.7 | 45.7 | | |
| 35 | 6.7 | 10.7 | 19.0 | 30.2 | 49.4 | | |
| 40 | 7.5 | 11.8 | 21.0 | 32.7 | 53.1 | | |
| 45 | 8.3 | 12.9 | 23.0 | 35.8 | 56.8 | | |
| 50 | 9.1 | 14.0 | 25.0 | 38.9 | 61.2 | 119 | |
| 55 | 9.9 | 15.1 | 26.9 | 42.0 | 65.6 | 126 | |
| 60 | 10.7 | 16.2 | 28.9 | 45.1 | 70.0 | 133 | |
| 65 | 11.5 | 17.3 | 30.9 | 48.2 | 74.4 | 141 | |
| 75 | 13.0 | 18.4 | 32.9 | 51.3 | 78.8 | 149 | 247 |
| 80 | | 2.6 | 36.8 | 57.5 | 87.0 | 165 | 272 |
| 90 | | 22.8 | 40.8 | 63.7 | 96.0 | 181 | 297 |
| 100 | | 25.0 | 44.8 | 69.9 | 105 | 197 | 322 |
| 110 | | 27.2 | 48.8 | 76.1 | 114 | 213 | 347 |
| 120 | | 29.4 | 52.8 | 82.3 | 123 | 229 | 372 |
| 130 | | 31.6 | 56.8 | 88.5 | 132 | 245 | 397 |
| 140 | | 32.8 | 60.8 | 95.0 | 141 | 261 | 422 |
| 150 | | 35.0 | 64.8 | 101 | 150 | 277 | 447 |
| 160 | | | | 107 | 159 | 293 | 497 |
| 180 | | | | 119 | 177 | 325 | 547 |
| 200 | | | | 131 | 195 | 357 | 597 |

Outras medidas sob consulta | Other measures upon request | Otras medidas solo bajo encargo | Autres mesures sur demande | Altre misure a richiesta

P (1) passo de rosca | thread pitch | paso de rosca | pas filetage | passo del filetto

Vários acabamentos. Peça-nos mais informações. | Surface treatment. Please ask us for more information. | Acabamientos variados. Pídenos más información. | Plusieurs finitions. Contactez-nous pour plus d'informations. | Ricopertura di superficie. A richiesta.



1

5

10

15

20

25

50

100

150

200

250

400

500

1000

peças, pieces, piezas, pièces, pezzi